



Job Name: _____

Type: _____

Part #: _____

Notes: _____

LSMPS Series Inverters

Emergency Micro Power Systems

DESCRIPTION:

- LSMPS Series inverter systems are designed to provide sinusoidal AC emergency power to connected incandescent, fluorescent or LED fixtures of between 20 and 55 watts
- Surface, recessed or ceiling T-Grid mount models are designed for easy installation either on or near controlled fixtures. LSMPS models support Normally-ON, Normally-OFF, switched operation or any combination thereof (see Wiring Diagrams section)

ELECTRICAL SPECIFICATIONS:

Input:

- Input Voltages: 120 or 277VAC $\pm 10\%$
- Input Frequencies: 60Hz $\pm 2\%$
- Input Protection: Provided by Service Panel, Rated 20A max.

Output:

- Output Voltages: 120 or 277VAC (60Hz)
- Efficiency Rating: 98% at full rated load (line)
- Waveform: Sinusoidal (digitally controlled, PWM design)
- Static Voltage: $\pm 5\%$ during battery discharge. 0-100% linear load.
- Output Frequencies: 60Hz. ± 0.3 Hz during emergency cycle
- Output Distortion: Less than 3% THD (linear load)
- Transfer Time: Less than 1.0 second
- Load Power Factor Range: 0.44 Lead to 0.44 Lag
- Minimum Loading: 0% of rated system capacity
- Output Protection: Inverter fuse

HOUSING:

- Heavy duty steel cabinet is finished in white baked-on powder paint providing scratch and corrosion resistance
- Optional paint color (-SP) finishes available, consult factory

MOUNTING:

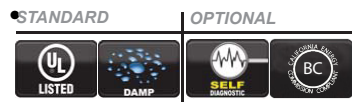
Surface Mount: Surface mount models are designed for mounting to walls by means of keyhole slots provided in the back of the unit housing.

Recess Mount: Recess models provide recess mounting holes on both sides of the enclosure.

T-Grid Mount: Housing design allows simple drop-in installation between t-grid runs. Safety wires (supplied by others) are required for attachment to building structure.

WARRANTY / LISTING:

- Unit:** (excluding lamps) Full coverage against defects in materials and workmanship for 3 years from date of shipment.
- Battery:** 3 years Lead-Acid, 5 yrs NiCd full warranty plus an additional 7 years of prorated coverage.
- All models are UL924 Listed and meet NFPA 101 Life Safety Code, NEC, OSHA, Local and State Codes. Optional T-Grid models are plenum rated, to UL2043 and meets city of Chicago CCEA Requirements.
- UL Listed for damp locations (0° – 50°C for NiCad models and 20° - 30°C for lead-calcium models).
- Optional -CEC models are Certified to CEC Under Title 20 regulations
- FCC Part 15 Class B Compliant.

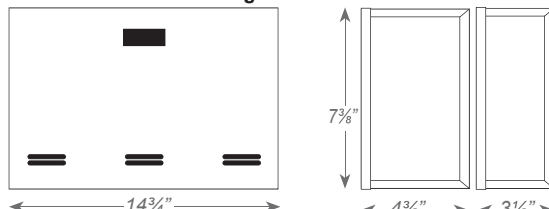


Surface Mount Models

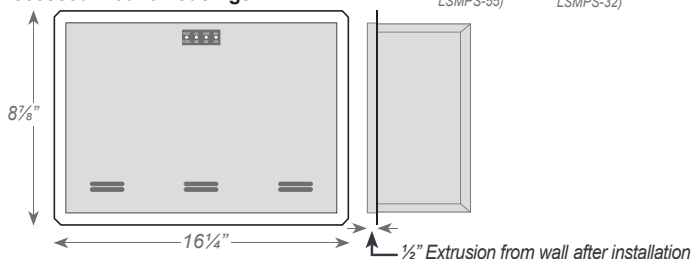
True Sinusoidal Output Power

DIMENSIONS

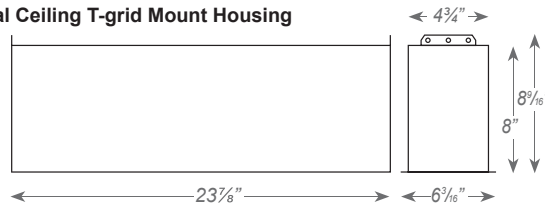
Standard Surface Mount Housings



Recessed Mount Housings



Optional Ceiling T-grid Mount Housing





Job Name: _____

Type: _____

Part #: _____

Notes: _____

The LSMPS Series is designed to provide 20W to 55W of emergency power to incandescent, fluorescent, and/or LED fixtures. The LSMPS unit provides clean, sinusoidal AC output power allowing it to be remotely mounted up to 1,000 feet away from the controlled fixture(s). Unlike a ballast fluorescent emergency pack, the LSMPS provides power to the input side of the fixture, (including the ballast) eliminating any chance of incompatibility. LSMPS Series models are available for surface, recessed or ceiling T-Grid mounting if required. All LSMPS systems will provide emergency power output for a minimum of 90-minutes.

FEATURES:

- For powering incandescent, fluorescent, and LED fixtures *
- True sinusoidal AC pulse width modulated (PWM) design provides clean 60Hz. emergency output
- Universal 120/277VAC, 60Hz. input/output
- Unit capacities of 20W to 55W
- "Soft Start" design reduces fixture inrush current
- Surface, recessed or T-Grid mount models
- Lumen output from fixture is 100% of nominal
- Unique design eliminates compatibility problems with LED drivers as well as fluorescent ballasts
- Normally-ON and/or Normally-OFF load output
- Provisions for local switching capability - Always-ON during emergency conditions regardless of local switch position
- Temperature compensated, dual-mode charger includes low voltage disconnect feature to provide protection against battery deep discharge
- Maintenance-free Lead-Calcium and premium grade Nickel-Cadmium battery models offered
- Control panel with momentary test switch, AC-ON, Charge-ON and Inverter-ON LED indicators
- Battery circuit fuse protected
- Reverse battery and AC lockout protection

* Consult factory for compatibility for other lamp types



WIRING: Connection to an unswitched AC circuit is required by the NEC. Wiring access is provided for by conduit knockouts in the unit housing. LSMPS Series models also provide knockouts in the back of the housing for rear wiring from standard electrical boxes when surface mounting.

LOAD COMPATIBILITY: Connection to an unswitched AC circuit is required by the NEC. Wiring access is provided for by conduit knockouts in the unit housing. LSMPS Series models also provide knockouts in the back of the housing for rear wiring from standard electrical boxes when surface mounting.

SYSTEM OPTIONS ^{(1) (2)}

ADD SUFFIX	DESCRIPTION
-S	Surface Mount Housing
-R	Recess Mount Housing
-T	Plenum Rated Ceiling T-Grid Mount Housing
-SP	Special Housing Color (specify)
-RTS	Remote Test Switch Panel ⁽³⁾⁽⁴⁾
-SDT	Self-Testing / Self-Diagnostics ⁽³⁾
-CEC	Title 20 Compliant ⁽⁵⁾

(1) Other options available. Consult factory.
 (2) Some options may impact product UL listing. Consult factory.
 (3) For more information, separate specification sheets are available on the -RTS and -SDT options. Consult factory.
 (4) Shipped separately as an accessory
 (5) Only available with -32 and -55 models



Job Name: _____

Type: _____

Part #: _____

Notes: _____