

HSVP53Q

EasyLED LEDicated Vaporproof with Straight Shade and Gooseneck Arm



The Vaporproof Straight Shade Gooseneck LEDlight luminaire is available with 5 Gooseneck arms of various lengths and is designed to replace HID lighting systems up to 175w MH or HPS. This vapor resistant fixture can withstand extreme physical and environmental abuse and is ideal for retail centers, industrial parks, schools and universities, public transit and airports, office buildings and medical facilities. Designed for architectural wall mounting up to heights of 20 feet based on light level and uniformity requirements.

Specifications and Features:

Housing:

Heavy Duty Die Cast Aluminum Housing with Integral Heat Sinking, 3/4" NPS Threaded Mount.

Listing & Ratings:

CSA: Listed for Wet Locations, ANSI/UL 1598, 8750
IP66 Sealed LED Compartment.

Finish:

Powdercoat Finish Over a Chromate Conversion Coating. Custom Colors Available Upon Request.

Lens:

Flat Clear Tempered Glass Lens

Mounting:

Fixed Mount

EasyLED LED:

Aluminum Boards

Wattage:

Array: 23w, System: 27w(175w HID Equivalent)

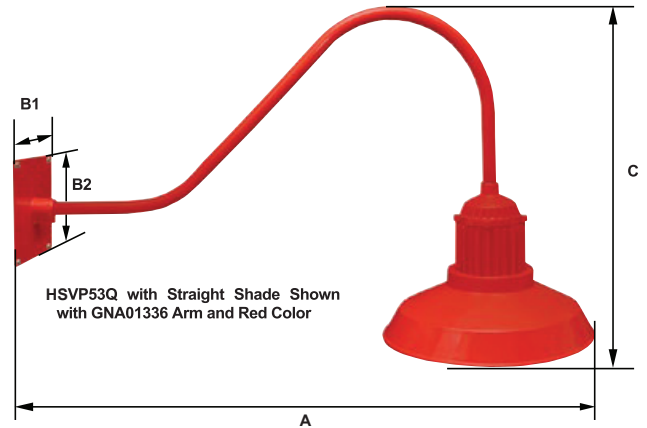
Driver:

Electronic Driver, 120-277V, 50/60Hz; Less Than 20% THD and PF>0.90. Standard Internal Surge Protection 2kV. 0-10V Dimming Standard for a Dimming Range of 100% to 10%; Dimming Source Current is 150 Microamps.

Warranty:

5-Year Warranty for -40°C to +50°C Environment.

See Page 3 for Projected Lumen Maintenance Table.



Dimensions

Base Length (B1)	8" (203mm)
Base Height (B2)	8" (203mm)
Length (A)	44" (1116mm)
Height (C)	27 1/2" (699mm)

Step 1: Select Luminaire

Order Information:

Model	Optics	Wattage	Driver	CCT	Color	Mounting	Options
HSVP53Q	F=Type V	1X23=23w	U=120-277V				

HSVP53Q=EasyLED LEDicated Pendant Mount Vaporproof

F=Type V	1X23=23w	U=120-277V	4K=4000K 5K=5000K	B=Black, RAL9011 P=Platinum, RAL9006 R=Red, RAL3020 W=White, RAL9016 C=Custom (Consult Factory)	GNF=Fixed Downlight, Includes 72" of Wire for Arm Feed Through to Wall Box	SF=Single Fuse (120-277V Only) DF=Double Fuse (120-277V Only)
----------	----------	------------	----------------------	---	--	--

Gooseneck Arm Specifications and Features:

Construction:

Heavy-Duty 3/4" Aluminum Arms with 3/4" NPS Threads on Fixture Mounting End.

Finish:

Powdercoat Finish Over a Chromate Conversion Coating. Custom Colors Available Upon Request.

Mounting Options:

Mount with 3/4" Square or Round Mounting Plates.

Step 2: Select Arm

Order Information:

Model	Length	Color	Mounting
GNA013 - Classic Hook	36=36" 30=30"	B=Black, RAL9011 P=Platinum, RAL9006 R=Red, RAL3020 W=White, RAL9016 C=Custom (Consult Factory)	S=Square Oversized Wall Mount R=Round Wall Mount N=No Wall Mount
GNA023 - Straight	30=30" 24=24" 18=18" 12=12"		
GNA033 - Straight Offset	30=30" 24=24"		
GNA043 - Straight Rise	30=30"		
GNA053 - Round Hook	30=30" 24=24" 18=18"		

Step 3: Select Shade

Order Information:

Model	Color	Color
VS30S=Straight Shade		
VS30S=Straight Shade	B=Black, RAL9011 P=Platinum, RAL9006 R=Red, RAL3020	W=White, RAL9016 C=Custom (Consult Factory)

Specification Guide:



Accessories & Replacement Parts



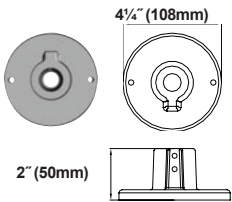
VS30S

**Replacement Parts
(Order Separately, Field Installed)**

VS30S* Straight Aluminum Shade, Powdercoat Finish

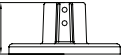
*Specify Color: B=Black, P=Platinum, R=Red, W=White, C=Custom (Consult Factory)

Wall Plate Dimensions



2" (50mm)

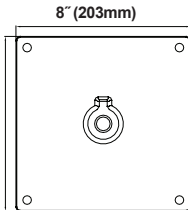
4 1/4" (108mm)



GНРMP3



1 1/4" (46mm)



GNSMP3

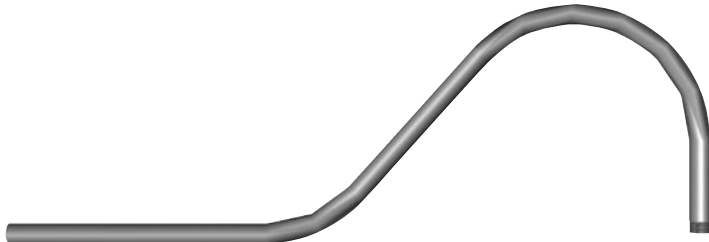
**Replacement Wall Plates
(Order Separately, Field Installed)**

GНРMP3* Round Wall Mount Plate, Powdercoat Finish.

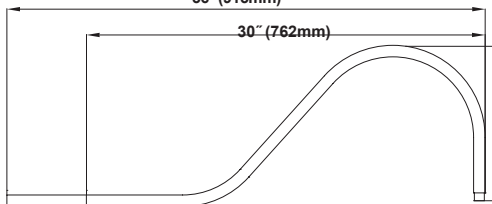
GNSMP3* Square Oversized Wall Mount Plate, Powdercoat Finish.

*Specify Color: B=Black, P=Platinum, R=Red, W=White, C=Custom (Consult Factory)

Gooseneck Dimensions



36" (915mm)



GNA01336P Classic Hook



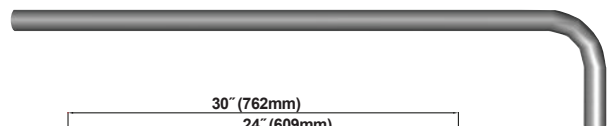
GNA03330P Straight Offset



GNA04330P Straight Rise



GNA05336P Round Hook

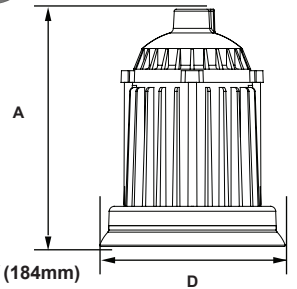


GNA02330P Straight

AVP53Q Dimensions



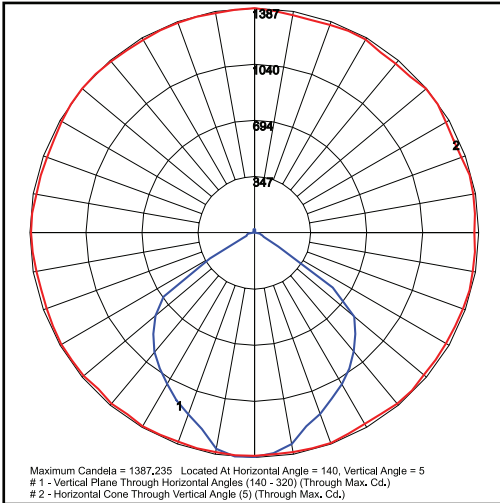
LEDicated Vaporproof



Dimensions

Diameter (D) 7 1/4" (184mm)

Height (A) 9 1/4" (235mm)

Photometric Data

 HSV53QF1X23U5K
 Type V, Straight Shade

 Grid in MH
 MH=10 Feet

Photometric Performance

LED Board Watts	Drive Current (mA)	Input Watts	Optics	5000 CCT 80 CRI					4000 CCT 80 CRI				
				Lumens	LPW	B	U	G	Lumens	0	B	U	G
EasyLED 23w	116	27	Type V	3,031	112	2	2	1	2,774	103	1	2	1

Projected Lumen Maintenance

Data shown for 5000 CCT			Compare to MH				
TM-21-11	Input Watts	Initial	25,000 Hrs	50,000 Hrs	100,000 Hrs	Calculated L70@ 25°C	
L70 Lumen Maintenance @ 25°C / 77°F	27	1.00	0.96	0.92	0.84	187,000	
TM-21-11	Input Watts	Initial	25,000 Hrs	50,000 Hrs	100,000 Hrs	Calculated L70@ 50°C	
L70 Lumen Maintenance @ 50°C / 122°F	27	1.00	0.93	0.86	0.72	107,000	
TM-21-11	Input Watts	Initial	25,000 Hrs	50,000 Hrs	100,000 Hrs	Calculated L80@ 40°C	
L80 Lumen Maintenance @ 40°C / 104°F	27	1.00	0.94	0.88	0.76	82,000	

NOTES:

1. Projected per IESNA TM-21-11. Data references the extrapolated performance projections for the 116mA base model in a 25°C ambient, based on 10,000 hours of LED testing per IESNA LM-80-08.
2. Compare to MH box indicates suggested Light Loss Factor (LLF) to be used when comparing to Metal Halide (MH) systems.