

HLR201 Series

Wrap Around Surface Mount Units

STANDARD



This surface mounted wrap around unit is designed for use in most commercial, residential, and institutional type applications. The unit provides maximum light output with minimum clearance.

Construction:

- Housing is designed from heavy gauge die formed steel and is finished in baked white enamel or polyester powder coating for maximum durability and reflectivity. Clear acrylic prismatic wrap around diffuser hinges from either side and snaps on and off for easy maintenance.

Electrical

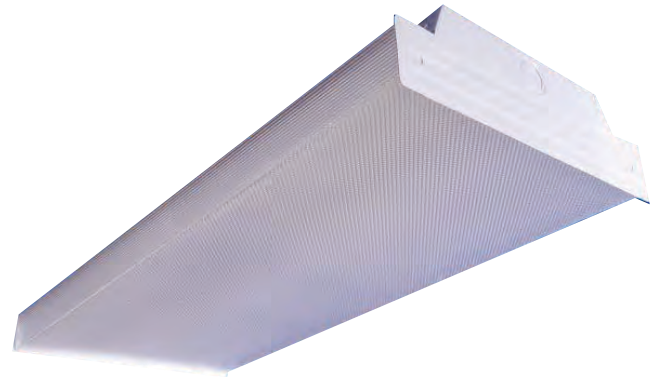
All units are furnished with UL Listed Class P thermally protected ballast. Other voltages are available upon request. Fixtures meet requirements for UL Luminaire Standard # 1598. All units comply with National Energy Standard. All units are UL certified damp location M 59006648

Mounting

Unit is equipped with knockouts and holes for pendant or surface mounting. This Fixture can be mounted individually or continuous run.

Ordering Guide

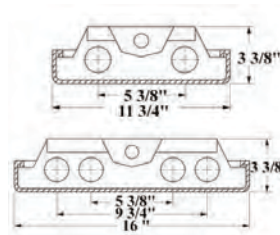
HLR2P01			
Series	# of Lamps	Lamp Size	
HLR201	1 = 1 lamp 2 = 2 lamp 3 = 3 lamp 4 = 4 lamp		
	Tandem One row		
	21		
	Tandem two rows		
	22		
	Tandem three row		
	23		
	Tandem four rows		
	24		
		T8	T5
		17 = F17T8	14 = F14T5
		25 = F25T8	21 = 21T5
		32 = F32T8	28 = F28T5
		59 = F96T8	
		86 = F96T8/HO	T5HO
			24 = F24T5
			39 = F39T5
		T12	54 = F54T5"
		15 = F15T12	
		20 = F20T12"	
		30 = F30T12	
		40 = F40T12	
		96 = F96T12	
		96HO = F96T12/HO	



WARRANTY & LISTINGS

- 5-year warranty of all electronics and housing.
- UL Certified for damp location M 59006648

DIMENSIONS



Fixture Length			
T12	T8	T5	Length
F20T12	F17T8	F14T5	24"
F40T12	F32T8	F28T5	48"
F96T12	F96T8	---	96"

For Tandem Units:

Multiply lamp length above by lamp quantity

Fixture	Bulb Spacing
2 Tube	5 3/8"
4 Tube	2 1/4" - 5 3/8"
2-Tube in 4 Tube Housing	7"

max weight= 16lbs/48 32lbs/96"